

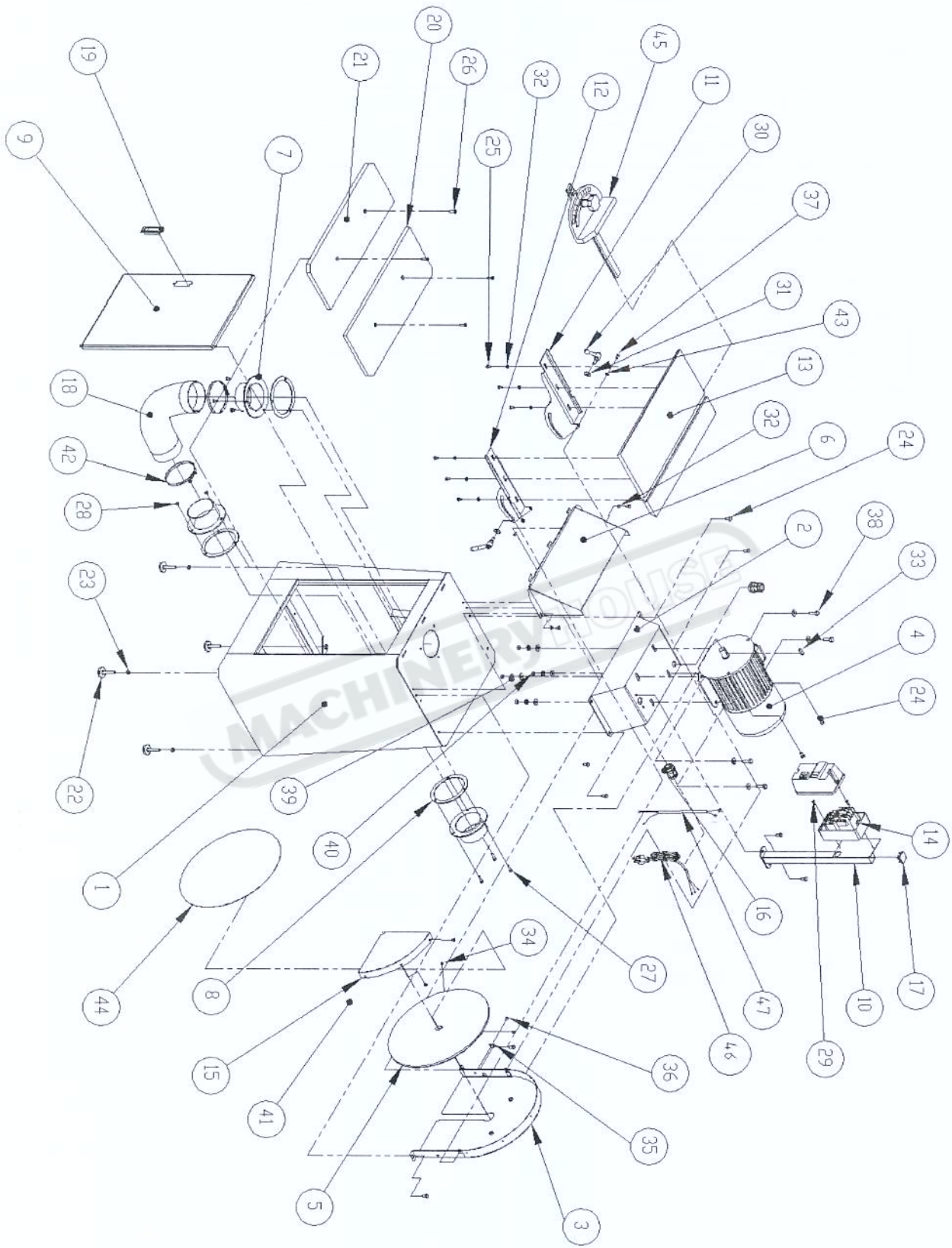
PARTS LIST

| PART NO | DESCRIPTION | SPECIFICATION | Q'TY |
|---------|-----------------------|-----------------------|------|
| 1 | Base | | 1 |
| 2 | Motor Base | | 1 |
| 3 | Disc Cover | | 1 |
| 4 | Motor | 2HP | 1 |
| 5 | Disc | 15"Cast Iron | 1 |
| 6 | Dust Hood Cover | | 1 |
| 7 | Dust Port | 4" | 3 |
| 8 | Foam | 4" | 3 |
| 9 | Base Door | | 1 |
| 10 | Switch Base | | 1 |
| 11 | Right Tilting Turning | | 1 |
| 12 | Left Tilting Turning | | 1 |
| 13 | Cast Iron Table | 508*307*15mmCast Iron | 1 |
| 14 | Switch Box | | 1 |
| 15 | Safety Guard | | 1 |
| 16 | Conduit Connector | PG13.5-08 | 2 |
| 17 | Bung | 32*32mm | 1 |
| 18 | Flexible Hose | 4" | 1 |
| 19 | Lock | | 1 |
| 20 | Wood Board | 15*530*214.5mm | 1 |
| 21 | Wood Board | 15*530*200.5mm | 1 |
| 22 | Screw-Mat | 3/8*2" | 4 |
| 23 | Nut | 3/8" | 4 |
| 24 | Hex Head Screw | M8*16 | 10 |
| 25 | Hex Head Screw | M6*12 | 11 |
| 26 | Flat Head Screw | M6*20 | 4 |
| 27 | Cap Screw | M6*30 | 3 |
| 28 | Nut | M6 | 3 |
| 29 | Philips Head Screw | M4*12 | 2 |
| 30 | Handle | M8*16 | 2 |
| 31 | Washer | M8*18 | 2 |
| 32 | Washer | 1/4" | 11 |
| 33 | Key | 7*7*25 | 1 |
| 34 | Set Screw | M8*10 | 2 |

PARTS LIST

| PART NO | DESCRIPTION | SPECIFICATION | Q'TY |
|---------|--------------------|---------------|------|
| 35 | Pointer | | 1 |
| 36 | Philips Head Screw | M5*5 | 1 |
| 37 | Philips Head Screw | M6*10 | 2 |
| 38 | Hex Head Screw | M8*25 | 4 |
| 39 | Washer | M8*18 | 16 |
| 40 | Nut | M8 | 4 |
| 41 | Philips Head Screw | M5*5 | 3 |
| 42 | Tie | 4" | 3 |
| 43 | Lock Washer | M6 | 2 |
| 44 | Sanding Paper | 15"#80 | 1 |
| 45 | Miter Gauge | | 1 |
| 46 | Power Cord | | 1 |
| 47 | Motor Cord | | 1 |

MACHINERYHOUSE



ORDERING REPLACEMENT PARTS

Replacement parts may be ordered from your local distributor. When ordering replacement parts, always provide the following information :

1. The model number and serial number of the 15" disc sander.
2. The parts number.
3. The parts name.
4. The desired quantity of the part.

TROUBLE SHOOTING

| TROUBLE | PROBABLE CAUSE | CORRECTION |
|--|--|--|
| Motor does not run when power switch is pressed "ON" | <ol style="list-style-type: none"> 1. Switch is burnt out. 2. Connection wire is loose or damaged. | <ol style="list-style-type: none"> 1. Replace the switch. 2. Tighten wire or replace wire. |
| Motor does not run at full speed. | <ol style="list-style-type: none"> 1. Power voltage is too low. 2. Motor is damaged. | <ol style="list-style-type: none"> 1. Test voltage. 2. Check and repair motor |
| Motor does not reach full power. | <ol style="list-style-type: none"> 1. Incorrect power wiring. 2. Overloaded. | <ol style="list-style-type: none"> 1. Replace with the correct size of the power wiring. 2. Reduce load. |
| Motor overheating | <ol style="list-style-type: none"> 1. Motor voltage is different 2. Motor is damaged | <ol style="list-style-type: none"> 1. Check the voltage label 2. Check and repair motor |